

SMART THERMOSTAT FOR ELECTRIC WATER HEATER

PRODUCT DESCRIPTION



EST-150 smart thermostat solution consists of 2 elements, connected by a quick faston connection cable.

The first element is the electronic functional capillary type thermostat. It controls the heater and collects data about water temperature.

The second element is electronics with LCD TFT display 1.44", 4 buttons, user interface, and Wi-Fi module. Collected data from the first element is being processed in the second one.

Mobile applications, as part of EST-150 solution, provide the complete product functionality. The conventional mechanical safety capillary type thermostat should be used additionally as a safety component in the water heater

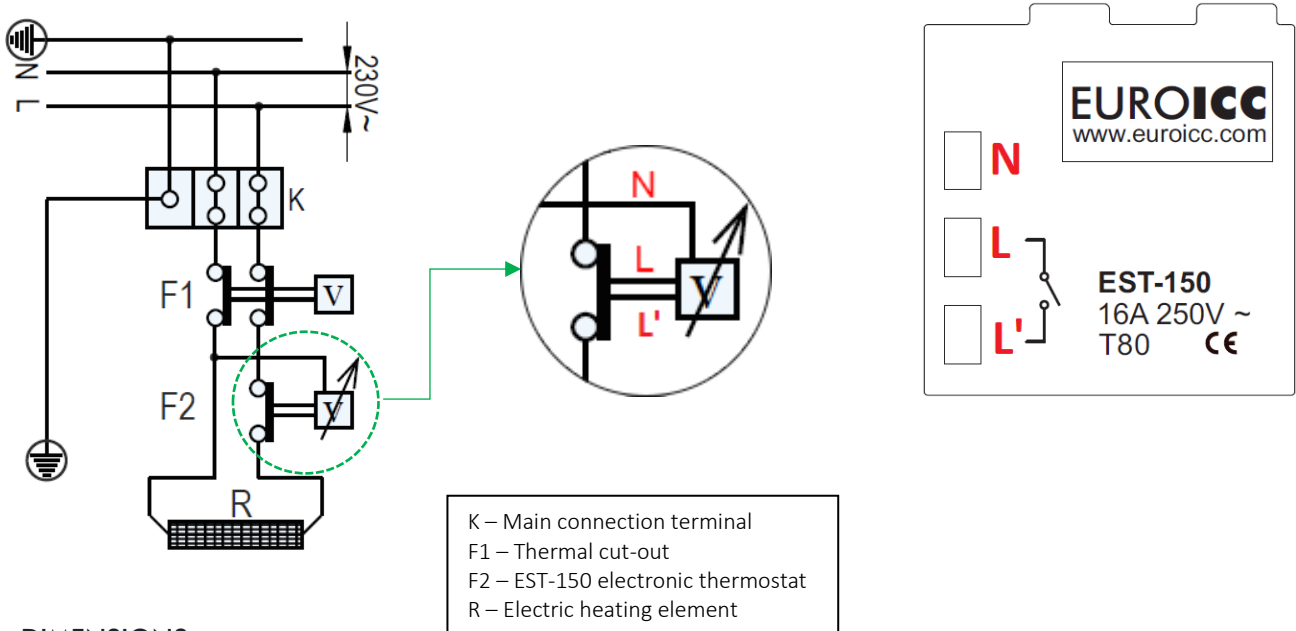
TECHNICAL DATA

PRODUCT SPECIFICATION	
Thermostat type	Single-phase electronic thermostat with flexible probe
Rated Current / Voltage	16A / 230V ~
Safety cut-out	External safety thermostat
Functional cut-off	Unipolar
Max functional temperature / Accuracy	75°C / ±2°C
Temperature selection range	From 15°C to Max
Thermal hysteresis	4 °C
The standard length of the probe's cable	500 mm
Electrical connection	Quick faston connection
Display	TFT LCD 1.44"
Display panel IP Class	IPX4
Operation Settings	With HMI and mobile APP
Wi-Fi protocol	IEEE 802.11 b/g/n
Approvals	Conformity CE IEC 60730-2-9:2015 + A1:2018 IEC 60730-1:2013 + A1:2015

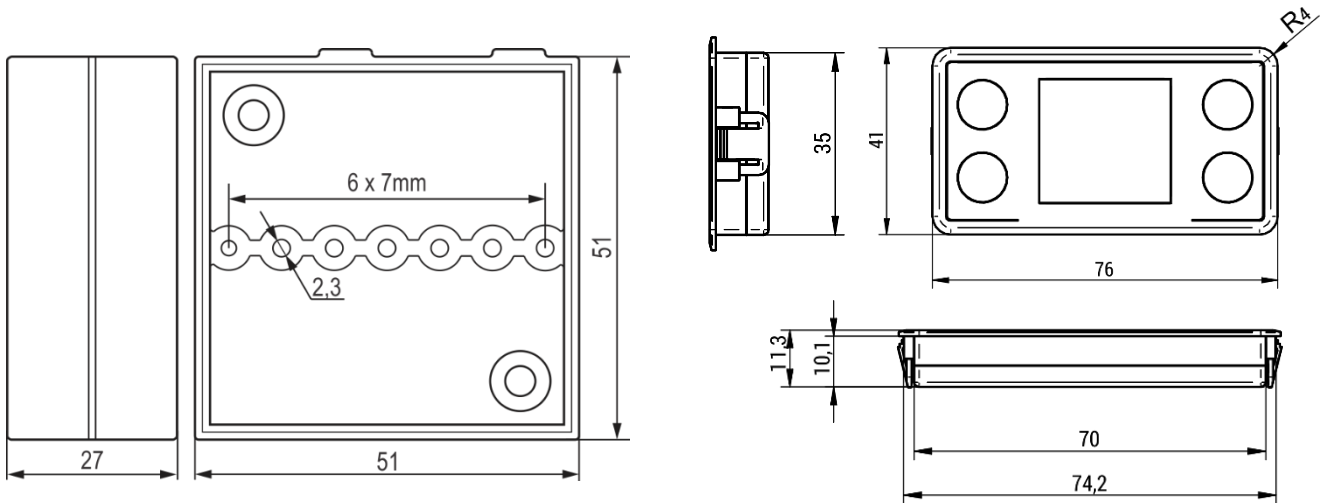
PRODUCT FEATURES

- » Anti-Legionella function
- » Freeze protection function
- » Increased accuracy due to electronic temperature measurement
- » Smart function: advanced software for heating optimization, reduces energy consumption up to 15%
- » Functional temperature controlled by software
- » ErP and Ecodesign compliant solution
- » Remote control via Android and iOS mobile apps
- » LCD display and digital control with user-friendly interface
- » 5 water heater operating modes

WIRING AND RESOURCES



DIMENSIONS



The LCD's mounting place surface (plastics or sheet metal) should not be thicker than 1,5 +/-0,1mm

SAFETY NOTES



- Caution, high voltage electronic device!
- EST-150 must be used with the third party mechanical safety capillary type thermostat
- Only qualified specialists and electricians should perform the installation of this device
- Conductors at terminals "N", "L" and "P" must be insulated with silicone insulation thermally rated greater than 150°C.